



Partner with ADM on  
**REGENERATIVE AGRICULTURE** for:

## Your Sustainable Sourcing & Environmental Impact Goals

ADM is your go-to partner to meet the emerging sustainability needs of your stakeholders and customers. Let us help you reach your sustainability goals through **Re:generations**, our regenerative agriculture program.

### ACHIEVE MORE WITH ADM

Whether for corporate commitments, supply resiliency or to enhance your brand, ADM's data-driven, farmer-centric program helps enable supply chain carbon reductions, positive environmental outcomes and more.

**re:generations**<sup>™</sup>

# Your goals. Our expertise.

Discover how ADM is paving the way with the commitments, investments, and solutions that make a positive impact toward a brighter future for us all.



For over a decade, ADM has been supporting sustainable and regenerative agriculture programs, and we continue to scale our efforts. In 2023, we worked with growers around the world to implement regenerative practices on over 2.8 million acres.

Increased our target to enroll

**5 MILLION  
ACRES**

in 2025

## ADM: A Trusted Regen Ag Partner

Leading companies, governments and ag organizations work with ADM to advance regenerative agriculture because ADM's innovative, farmer-centric approach delivers direct supply chain impact with multiple benefits.



Reduced  
Greenhouse Gas  
Emissions



Improved  
Biodiversity, Soil  
& Water Quality



Increased Supply  
Transparency



Stronger Farmer  
Connections







# Regenerative Agriculture 101

If it seems like you are suddenly hearing the expression ‘regenerative agriculture’ all the time, you aren’t wrong. The concept of ‘regen ag’ has gained considerable traction in the past couple of years. In 2023, 77% of consumers stated they were aware of regen ag, an increase of 20 points vs 2021.<sup>1</sup>

## Why Regenerative Agriculture?

As the world becomes increasingly concerned about climate impact, stakeholders are demanding change and holding companies accountable for sustainably operating. In response, companies are setting climate goals to lower their supply chain Scope 3 emissions footprint, which regenerative agriculture can address.

## What are Scope 3 Emissions?

A company’s greenhouse gas footprint (which includes carbon) includes three scopes, but the majority of environmental impact is usually in Scope 3, specifically purchased ingredients. Regenerative agriculture addresses Scope 3 emissions by focusing on reducing the environmental impact of purchased ingredients.

### Investors

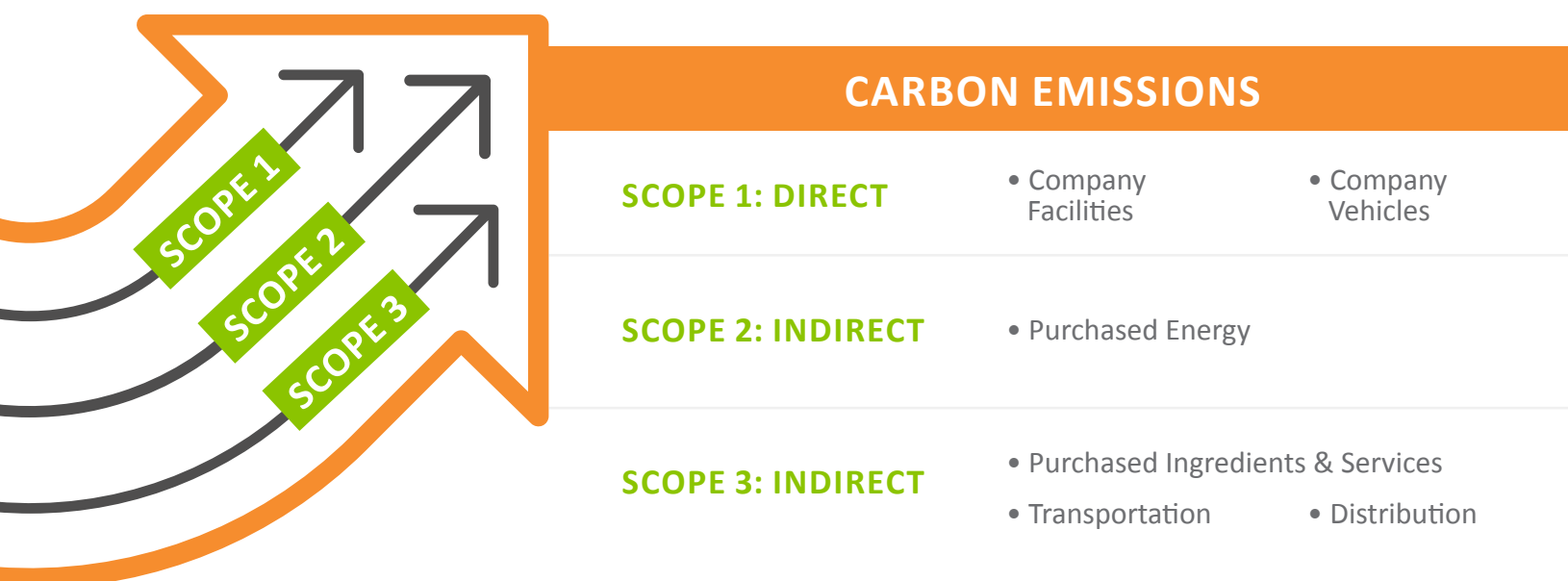
90% of global institutional investors will revise investments if companies do not consider ESG criteria in their business model.<sup>2</sup>

### Employees

Sustainability is a top criterion in choosing an employer for 2/3 of those under age 34.<sup>3</sup>

### Consumers

84% of U.S. consumers say they would pay more for food products that are sustainably sourced.<sup>1</sup>



Source: <sup>1</sup>The Hartman Group, Sustainability 2023; <sup>2</sup>McKinsey, 2022; <sup>3</sup>Epson, Sustainable Working Environment Index, 2021

## What is Regenerative Agriculture?

ADM defines it as a system of practices that sequester carbon in the soil and intentionally improve soil health, biodiversity, water quality and air quality while ensuring the viability of farm production. Adapted to local physical conditions, regen ag revolves around five guiding principles that create positive outcomes and enable long term impacts.

## Principles & Practices: Regenerative Agriculture Summary



### Maintain Living Roots in Soil

Cover Crops



### Maximize Diversity: Crops, Soil, Pollinators

Crop Rotation

Edge of Field Practices



### Minimize Soil Disturbance

Conservation

Tillage



### Continuously Cover Bare Soil

Cover Crops

No Till



### Responsibly Manage Inputs

Fertilizer & Pesticides

### KEY REGENERATIVE AGRICULTURE PRINCIPLES

- Keep soil covered
- Minimize soil disturbance
- Maximize biodiversity
- Maintain living roots
- Responsibly manage inputs



### POSITIVE OUTCOMES

- Combat climate change
- Improves land resiliency
- Increases farm profitability
- Supports water quality

### LONG-TERM IMPACTS

- Farm profitability
- Soil health
- Biodiversity
- Watershed health

ADM re:generations™

## How does it work?



### Direct Impacts on your ADM Sourced Products

Acres mapped to your supply shed offer credible, farm level reduction outcomes that you can use to meet your Scope 3 GHG emission reduction goals.



#### STEP 1 You Sign Up for Acres

Work with ADM to match your product volume with regeneratively managed acres across multiple crop types sourced from Re:generations farmers.



#### STEP 2 Farmers Implement Practices

ADM enrolls farmers, sets up data collection and manages financial incentives and technical support to implement regenerative practices.



#### STEP 3 Your Company Benefits

Use your annual outcomes data package to report against goals and make product claims across metrics like:

- Scope 3 GHG reductions
- Water quality & use
- Nitrogen efficiency
- Biodiversity





ADM re:generations™

## Why ADM?

Our scope and partnerships make us your one-stop shop for sustainable sourcing

### Global Coverage in 2023

Targeting 5 million acres in 2025.



### World Class Technical Partners

ADM's project partners are experts that carry credibility with farmers and help accelerate field level practices.



### Scalable, Multi-Crop Network

ADM offers coverage across a variety of ingredients.



CORN



COTTON



WHEAT



CANOLA



SOY



BARLEY



PEANUT



SORGHUM

Beyond Carbon:

# ADM Delivers More

Whether for corporate commitments, to mitigate supply risk or to enhance your brand, ADM's innovative, farmer-centric program enables benefits beyond Scope 3 GHG emissions reductions.

## Why ADM?

- Direct supply chain impact
- Data-driven, farmer-centric approach
- A decade of experience & expertise
- Scalable, multi-crop network
- Brand insights & messaging support
- Close relationships with growers & technical partners



## How Can You Benefit?



Reduce Scope 3  
GHG Emissions



Improve Soil,  
Biodiversity &  
Water Quality



Increase Supply  
Transparency



Mitigate Risk via  
Farm Resilience



Expand Farmer  
Connections



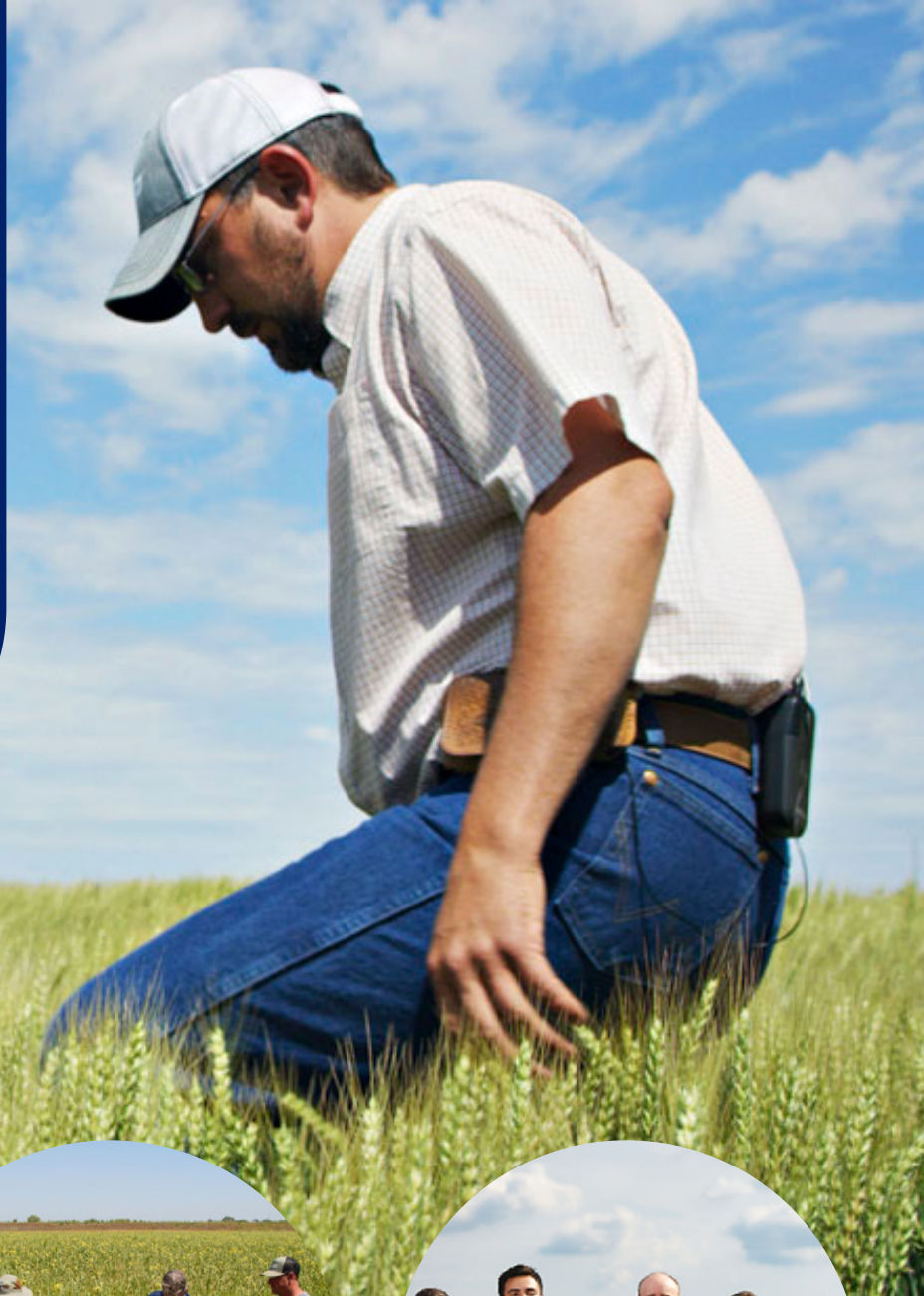
Enhance  
Brand



ADM Advantage

# Direct Grower Connections

Enabling stronger supply chain connections, communications opportunities and long-term program success.



## Grower Events

Grower appreciation events strengthen your connection to producers and the source of your key ingredients.

## On-Farm Events

On-farm events feature tech partners that help scale regen ag practice adoption, and advance your goals.

## Farm Family Meet-Ups

Direct farm family meet-ups enable transparency and supply chain messaging/story telling.





# Our purpose is to unlock the power of nature to enrich the quality of life

At ADM, sustainable practices and a focus on environmental responsibility are not separate from our primary business: they are integral to the work we do every day to serve customers. Our sustainability strategy is organized into three pillars with a variety of actions under each.



Feed the  
World



Protect  
Nature



Enrich  
Lives

## ADM. Your Go-To Sustainability Partner.

The commitments, expertise and scale to achieve your goals & create impact.

### Ambitious Environmental Targets & Investments

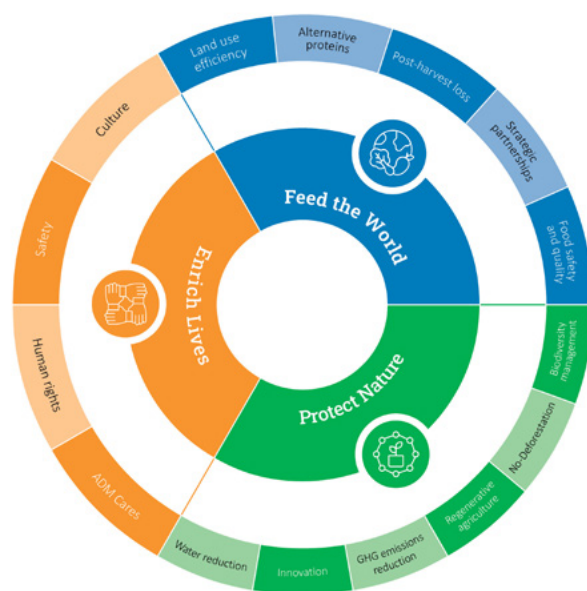
Targets across GHG Emissions, Energy, Water & Waste  
Investments in De-carbonization & Renewable Energy

### Regen Ag Leadership & Direct Grower Connections

Expanding our program across millions of acres to help you address Scope 3 reduction and climate goals

### Supply Chain Scale

Our vast footprint and extensive range of climate-smart crops make for one-stop sustainable sourcing



[adm.com/sustainability](https://adm.com/sustainability)

©2024 ADM CHGlobal24\_ASO140496

Contact Us to  
Learn More

